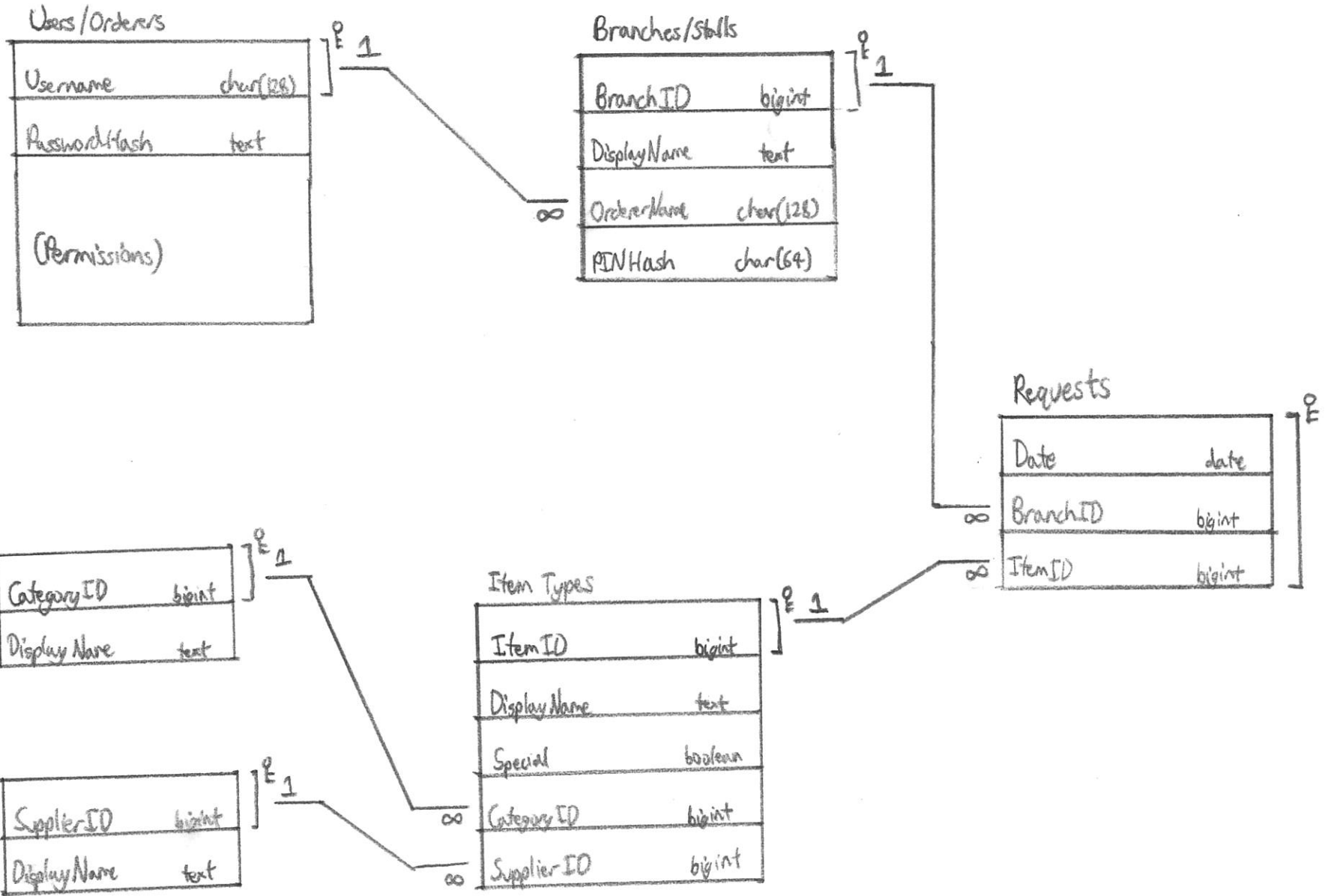


Database Diagram - My Nonna's Inventory System



My Noma's Inventory System

Generate Barcodes
Order Report

Only shown if logged in

Account

Sign In

Only show if not logged in

Sign Out (username)
Change Password

Only show if logged in

Item Database

Edit Items
Edit Categories
Edit Suppliers
Remove Item
Remove Category
Remove Supplier

Only shown if user has permission

Stalls

Add/Edit Stalls
Remove Stall

Only show if user has permission

Order Report

Not shown if there are no notices

Notices

[Stall Name] has not performed a stock-take today.

[Stall Name] is performing a stock-take.

Red border, lighter-red background

Yellow border, light-yellow background

Orders

Selected option is shaded darker

Group by: None By stall By category By supplier

If a grouping is selected, the corresponding column should not be shown.

Stall	Category	Supplier	Item
[Group Heading] - Bold text, shows name of stall/category/supplier			
Stall 1	Dry Foods	Supplier 1	Penne Pasta (500g pkt)
		⋮	
[Group Heading 2]			
Stall 2	Bread	Supplier 2	Sandwich Loaf (x8 pkt)
		⋮	

Sign In

Sign In

[Notice]

Username

Password

Remember

.....

Sign In

Red background
Displayed when there is an error
'Incorrect password', 'Sign in is required', etc.

Displays "Username" when not filled in

Displays "Password" when not filled in
should not show password, but dots instead:

.....

Logs in and redirects to homepage

Add/Edit Item

[Item Selector] ▼ - Drop-down menu to select item to edit (or a new item)

Name: [Item Name] - Text-box to type new name of item

Category: [Category Selector] ▼ - Drop-down menu to select item's category

Category Name: [New category name] - Text-box to type new name of category (if adding/rename)

Supplier: [Supplier selector] ▼ - Drop-down menu to select item's supplier

Supplier Name: [New supplier name] - Text-box to type new name of supplier (if adding/rename)

[Submit] - Sends changes to server

Add/Edit Stall

[Stall Selector] ▼ - Select stall to edit (or [New Stall])

Name: [Stall Name]

Manager: [User Selector] ▼ - Select who is responsible for adding for the stall (whose order report it appears on)

PIN: [Stall PIN] - Optionally change the PIN for the stall

[Confirm PIN] - PIN should not be changed if confirm PIN is different

Strength: [Weak | Strong | Very Strong] - Password strength measurement

[Submit]

Remove [Item | Category | Supplier | Stall]

- Dropdown menu:
Select element
to remove

Notes for Selections in Drop-down Menus

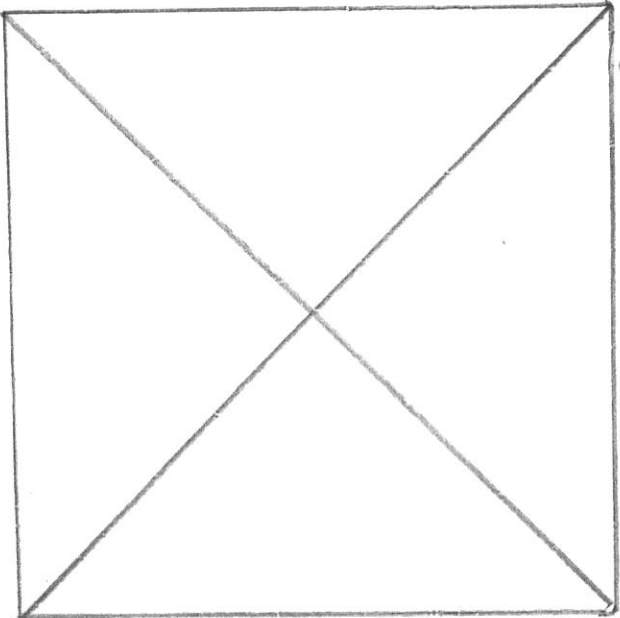
- Whenever an item/ingredient needs to be selected with a drop-down menu, the items should be grouped by their Category.
- Whenever a stall needs to be selected with a drop-down menu, the stalls should be grouped by the user which processes their order requests (their Order Name).

Barcode Generation

- Dropdown menu:
Selects which item will
be requested when the barcode
is scanned (or Begin/End
Stock-Take)

Select an item and press the Generate button to create a QR code.

Click on the QR code to download it.



- QR code image
- 300x300 px
- Redirect to page that places an order request for the selected item (when scanned)
- Clicking the image will allow the user to download it

- Only display this message when no item has been selected yet.

- Only display the message and QR code if an item has been selected.